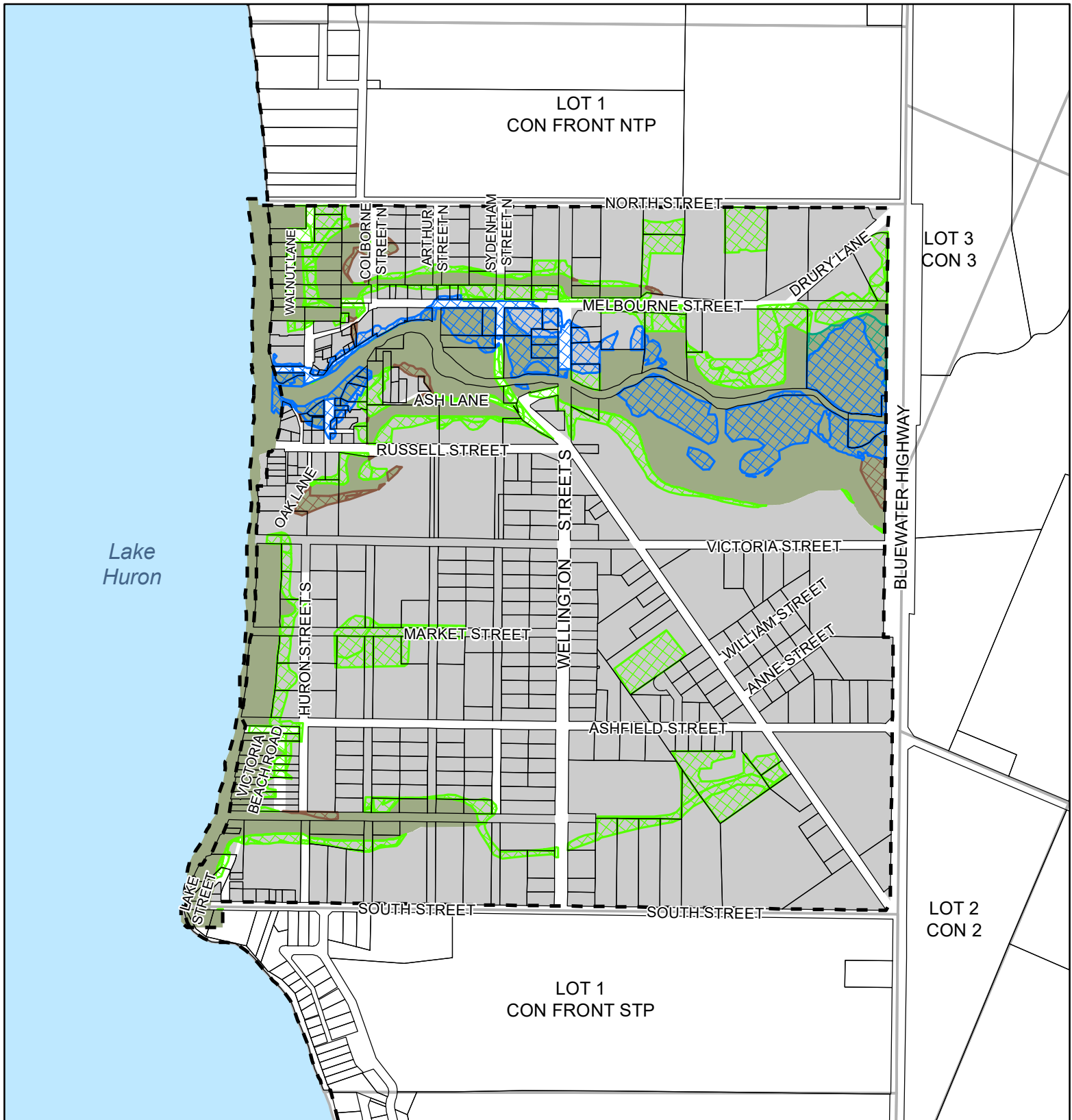


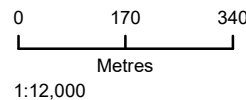
TOWNSHIP OF ASHFIELD-COLBORNE-WAWANOSH

PORT ALBERT



Produced by the County of Huron GIS Services with data supplied under License by Members of the Ontario Geospatial Data Exchange, MVCA, ABCA, SVCA, UTRCA and MNR&F. Orthoimagery flown in 2015. This map is illustrative only. Do not rely on it as a precise indicator of routes, feature locations, nor as a guide to navigation. Copyright © Queen's Printer 2021.

Last Modified 6/14/2021



Proposed Changes

- Change to Flood Hazard
- Change to Hamlet / Village
- Change to Natural Environment
- Change to Recreation

Current Landuse

- Hamlet / Village
- Natural Environment