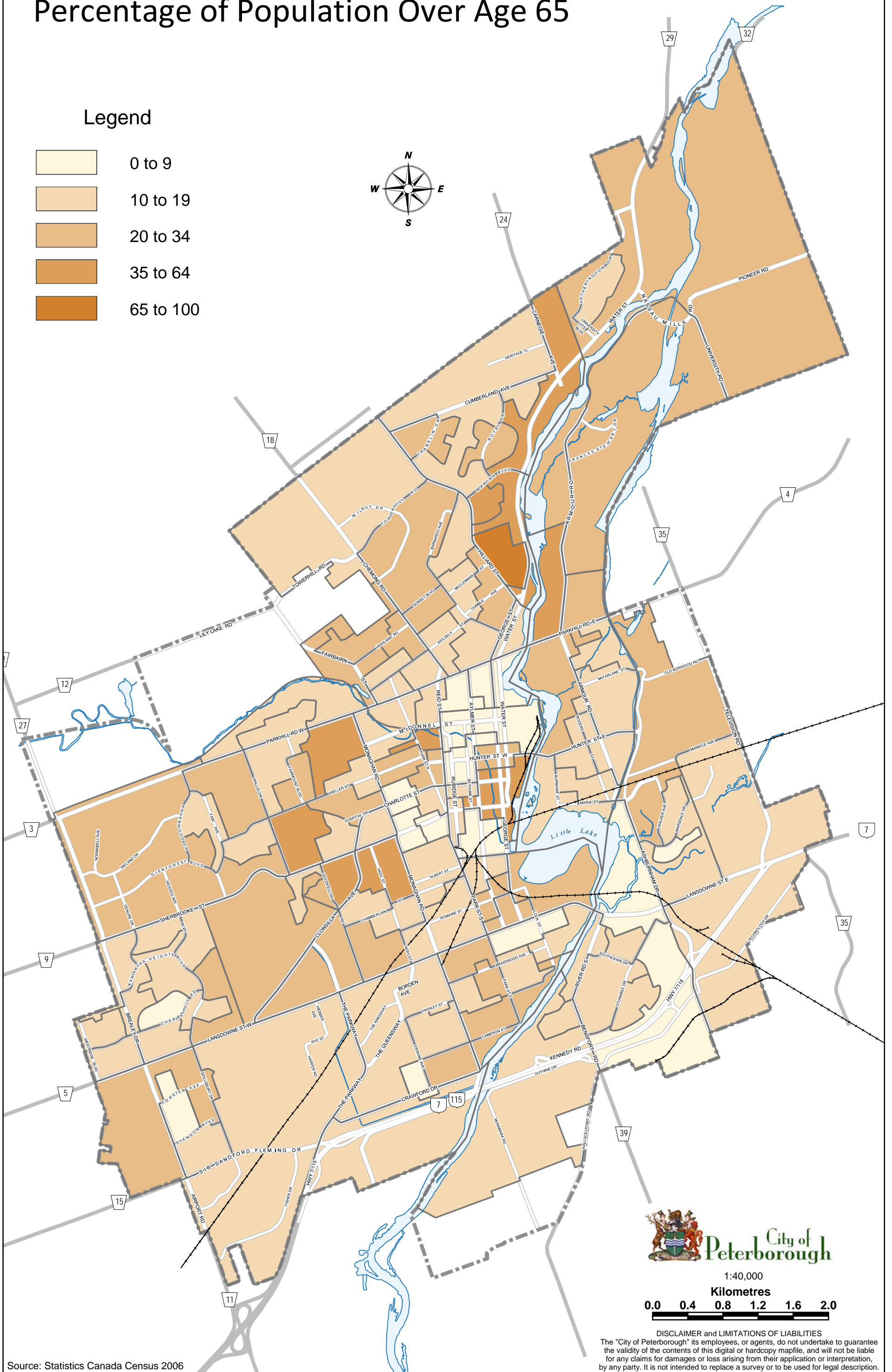
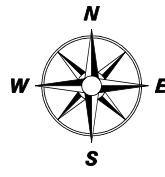
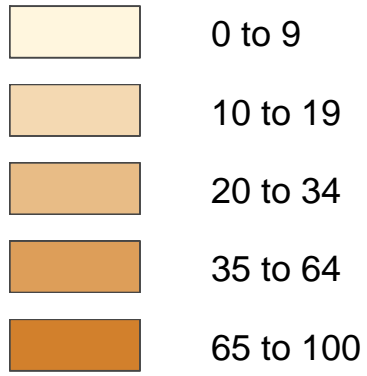


# Percentage of Population Over Age 65

## Legend



1:40,000

Kilometres

0.0 0.4 0.8 1.2 1.6 2.0

**DISCLAIMER and LIMITATIONS OF LIABILITIES**  
 The "City of Peterborough" its employees, or agents, do not undertake to guarantee the validity of the contents of this digital or hardcopy mapfile, and will not be liable for any claims for damages or loss arising from their application or interpretation, by any party. It is not intended to replace a survey or to be used for legal description.