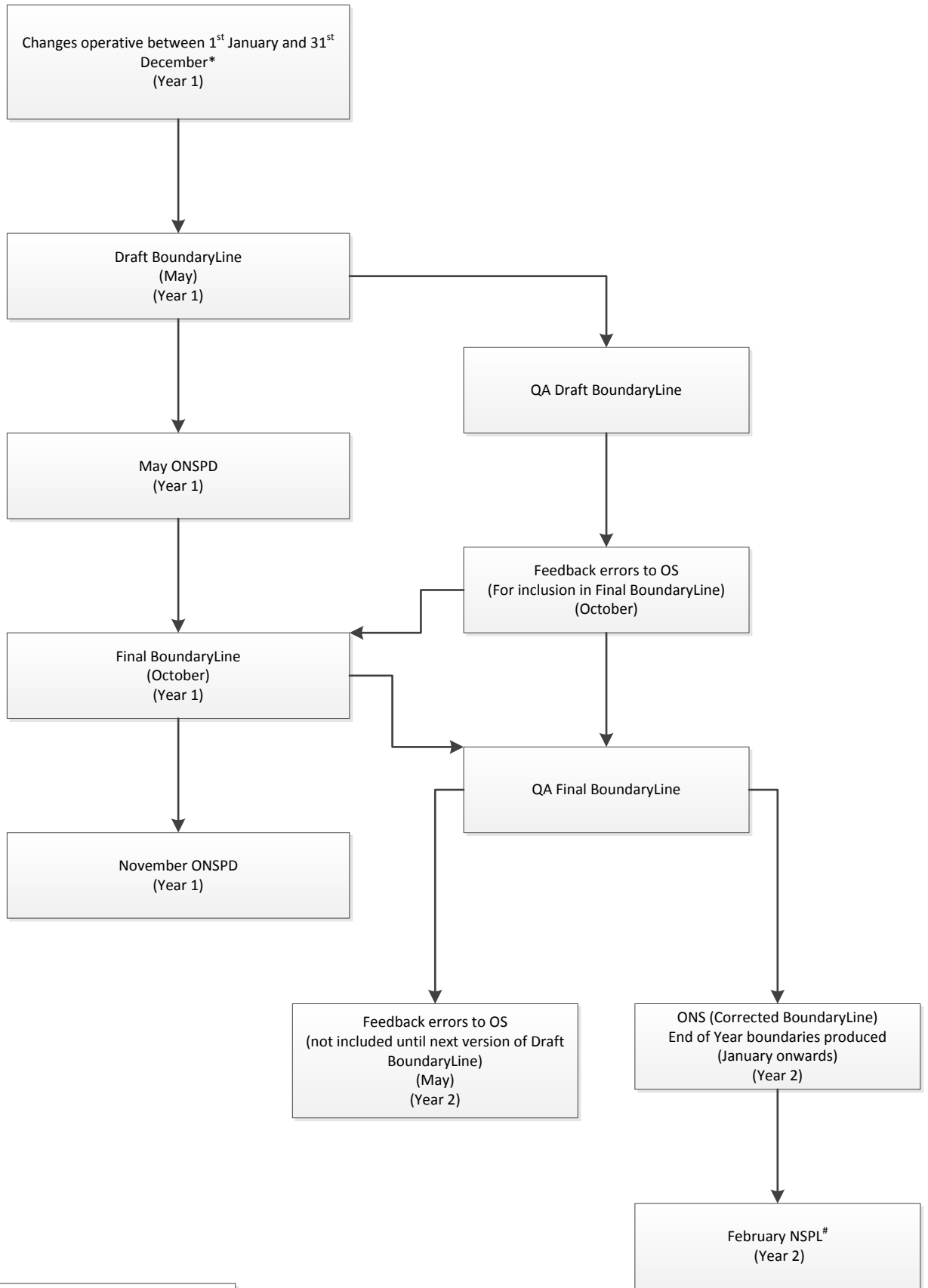


How BoundaryLine, ONS Boundaries and ONS Postcode Directories (NSPL and ONSPD) are processed



*Known and predicted changes for any year. Any changes not included in Draft BoundaryLine (May) will be included in Final BoundaryLine (October) if received before September cut off date.
 N.B. Changes to Final BoundaryLine discovered after October will be included in published ONS end of year boundaries.

Always use the NSPL for official statistics - Explanation_of_the_differences_between_the_NSPL_and_the_ONSPD_v2.2