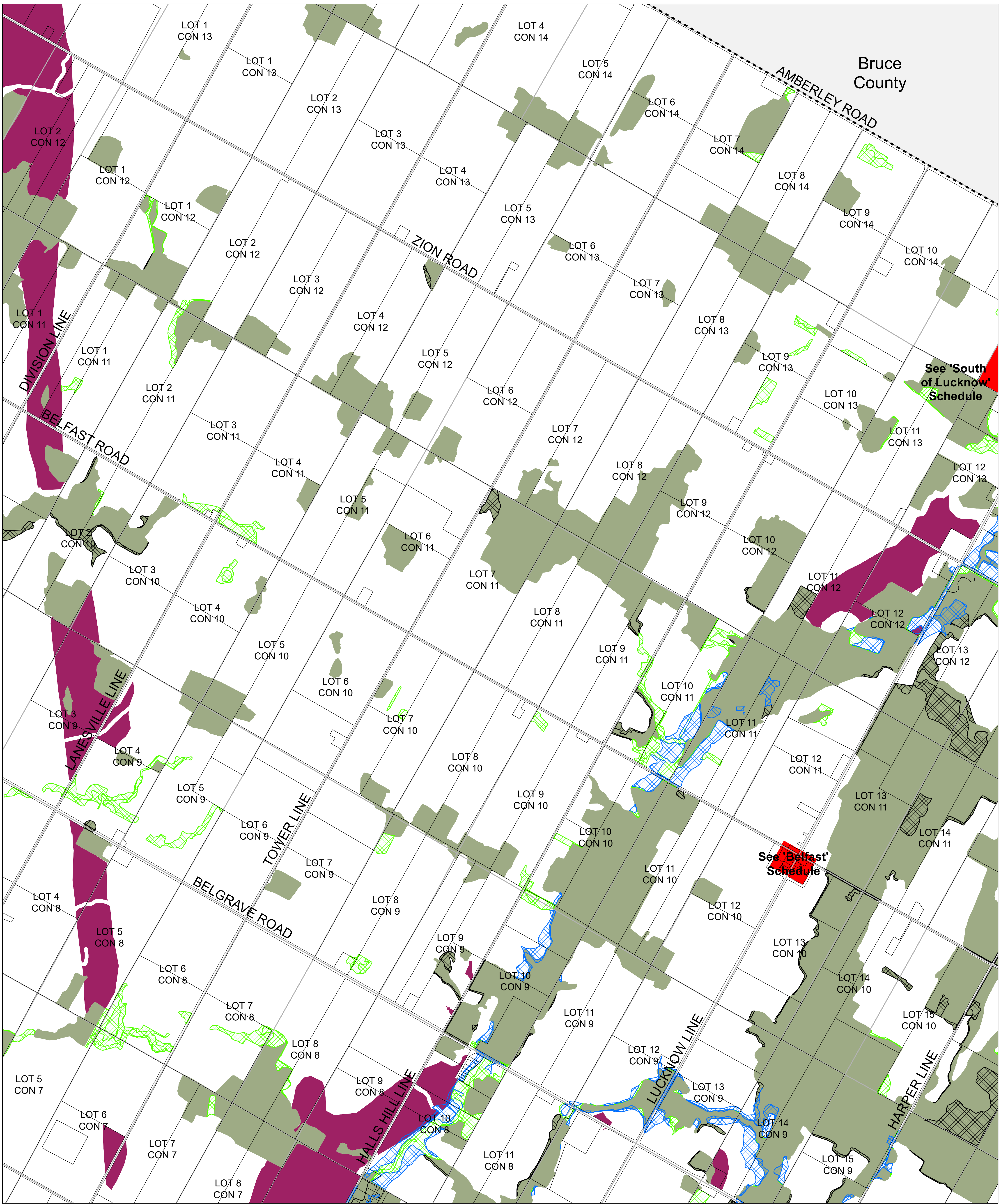


TOWNSHIP OF ASHFIELD-COLBORNE-WAWANOSH

OFFICIAL PLAN

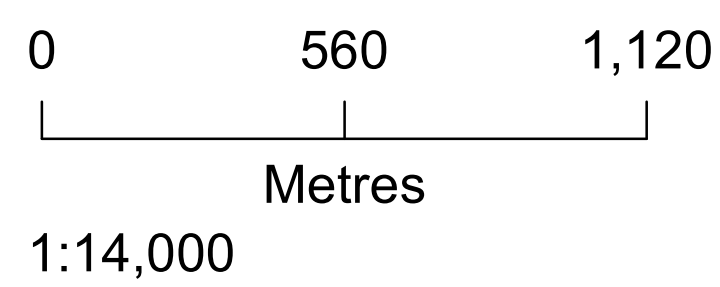
C2

INDEX



Produced by the County of Huron GIS Services with data supplied under License by Members of the Ontario Geospatial Data Exchange, MVCA, ABCA, SVCA, UTRCA and MNR&F. Orthoimagery flown in 2015. This map is illustrative only. Do not rely on it as a precise indicator of routes, feature locations, nor as a guide to navigation. Copyright © Queen's Printer 2021.

Last Modified 6/14/2021



- Proposed Changes**
- Change to Agriculture
 - Change to Flood Hazard
 - Change to Natural Environment
- Current Landuse**
- Natural Environment
 - Extractive
 - Hamlet / Village
 - Agriculture