

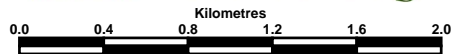
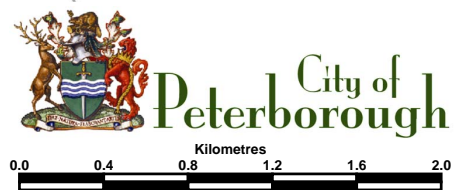
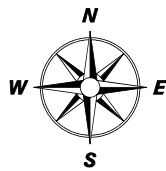
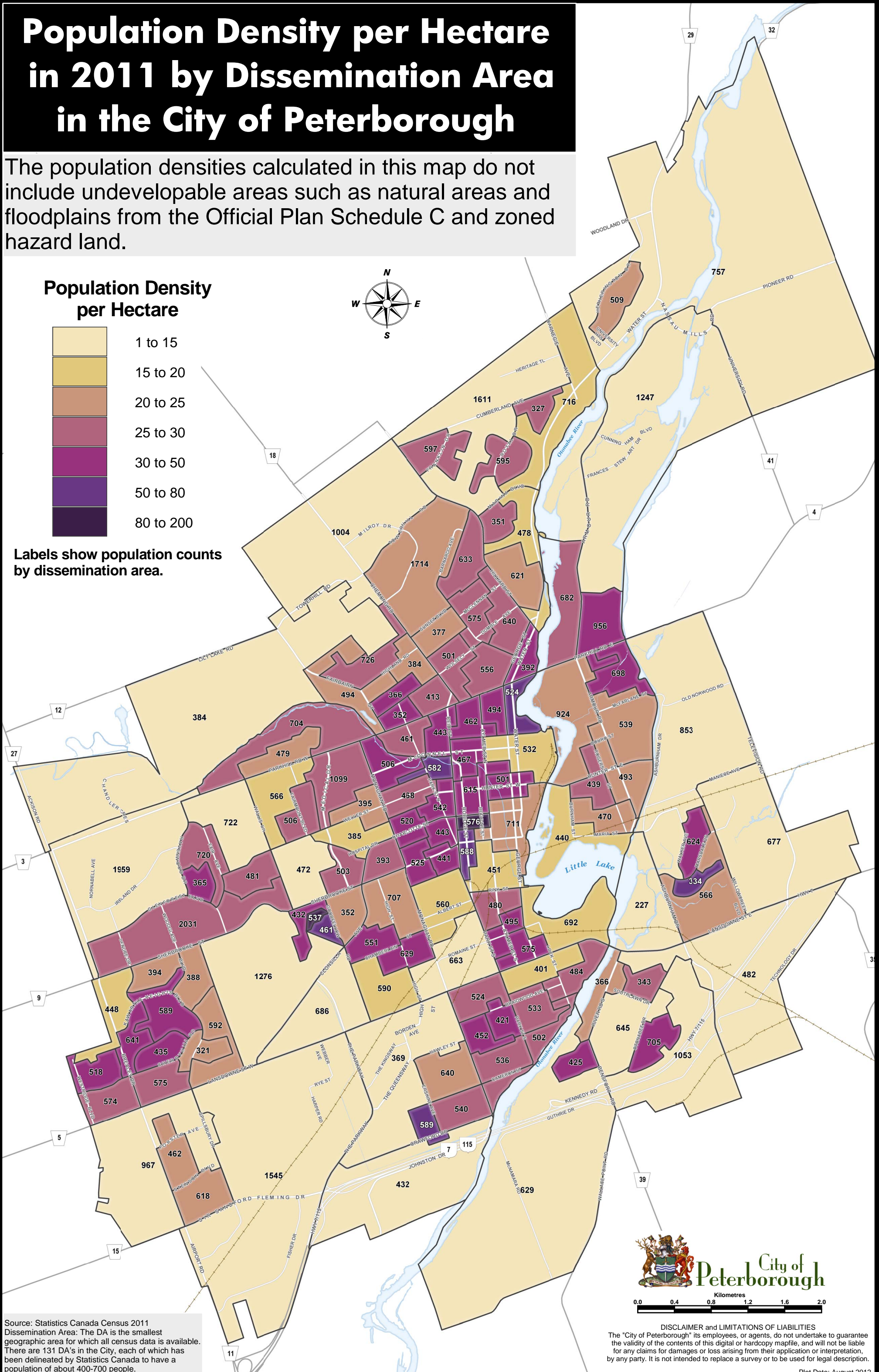
# Population Density per Hectare in 2011 by Dissemination Area in the City of Peterborough

The population densities calculated in this map do not include undevelopable areas such as natural areas and floodplains from the Official Plan Schedule C and zoned hazard land.

## Population Density per Hectare



Labels show population counts by dissemination area.



Source: Statistics Canada Census 2011  
 Dissemination Area: The DA is the smallest geographic area for which all census data is available. There are 131 DA's in the City, each of which has been delineated by Statistics Canada to have a population of about 400-700 people.

**DISCLAIMER and LIMITATIONS OF LIABILITIES**  
 The "City of Peterborough" its employees, or agents, do not undertake to guarantee the validity of the contents of this digital or hardcopy mapfile, and will not be liable for any claims for damages or loss arising from their application or interpretation, by any party. It is not intended to replace a survey or to be used for legal description.

Plot Date: August 2012