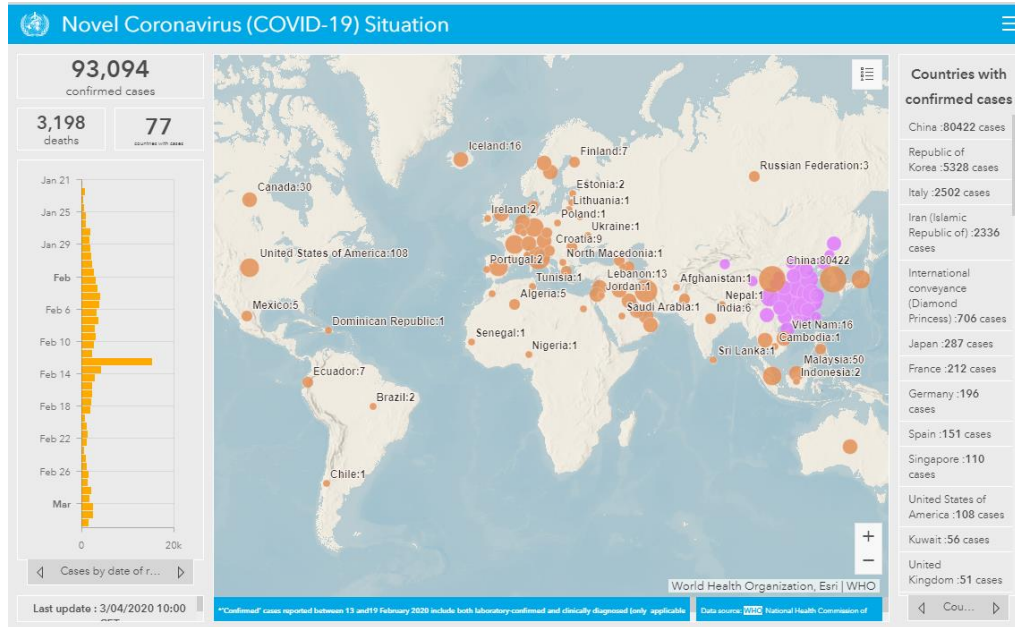


COVID-19 PREPAREDNESS AND RESPONSE USING ARCGIS

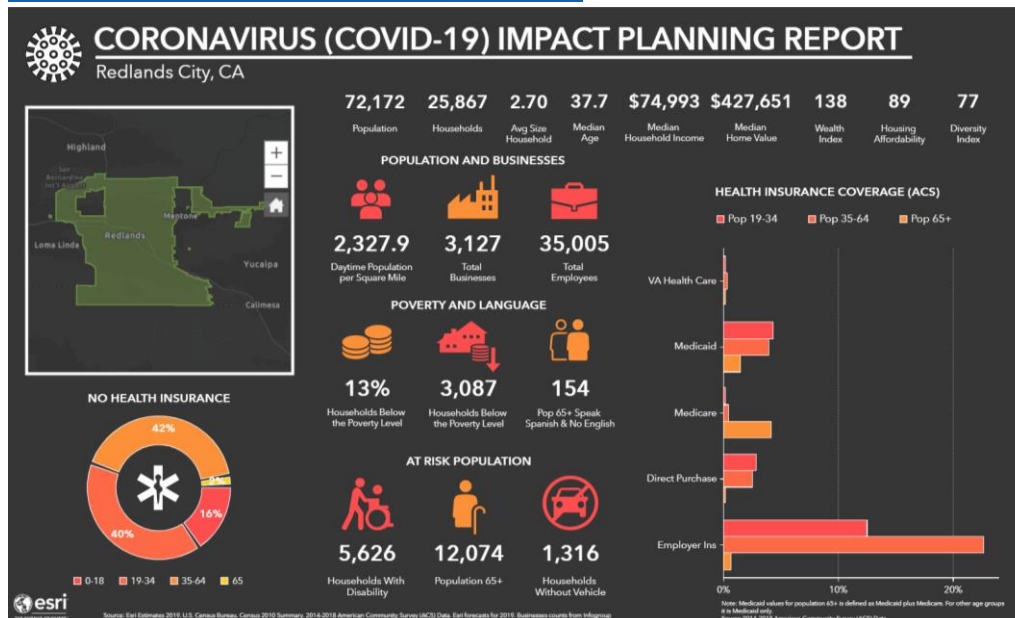
Link to: [COVID-19 GIS Hub: https://go.esri.com/Coronavirus](https://go.esri.com/Coronavirus)

Link to: [How your GIS department can respond to COVID-19 – with Data links!](#)

[WORLD HEALTH ORGANIZATION'S ARCGIS DASHBOARD \(CLICK HERE\)](#)



[COVID-19 BUSINESS ANALYST TEMPLATE \(CLICK HERE\)](#)



Questions? Contact: Samantha Williams; swilliams@esri.com

|| T: 703-506-9515 ext.6339 || M: 571-287-1217

GOAL: Use spatial analytics to better understand COVID-19 spread and potential impact to facilitate data-driven decisions on mitigation and resource allocation.

ArcGIS can help you answer the *where* questions...
Where do we start? Where are our priority targets?

- **Where are our most vulnerable populations?**
Identify key populations such as those with poor access to care, multiple comorbidities, advanced age or immunocompromised state.
- **Understand the spreading patterns – where should we send our resources now and possibly in the future?**
Know the best places to send your staff, tests, supplies, etc.

Where do we send people?

- **Keep the vulnerable safe (separated).**
Regardless of the facility, keep the immunosuppressed, those on certain medications (e.g., chemotherapy), those with certain conditions (e.g., HIV/AIDS), and those in certain states (e.g., transplant/surgery) separated from those who may be infectious.
- **Quarantine known contacts of cases.**
Examine options for quarantine, whether in your facility or externally as part of your containment efforts.
- **Where, within your system can people be tested?**
The best place for people to get tested may be at a mobile site based on location (airport, public transport hub, school) or demographics (homeless, nursing home, etc.). Consider population vulnerabilities during site selection.

What do we share?

- **Know what messaging to provide to certain audiences in specific locations (marketing/education).**
Different content resonates with different demographics; know what to say that will encourage different community members to act.
- **Share pertinent data – work together within your communities to stay on top of the evolving situation.**
Use the COVID-19 Hub to add additional data resources to your existing layers and share layers helpful for your community.

Public Health Preparedness: A Geographic Approach (Summary Below) | | The Six Domains of Preparedness (CDC)

Domain	Concept	Need (COVID-19 Context)	Implementation / Resources
Community Resilience PREPARATION	Preparing for and recovering from emergencies	<ul style="list-style-type: none"> Put all resources on map Have a data infrastructure Answer: Where are our vendors, staff, hospitals, ambulances, airports, etc.? 	Software Requirement: ArcGIS Desktop Pro Hosting: ArcGIS Online or Enterprise Workflow: Hazard Assessment & Analysis Configuration
Information Management INFORMATION & ACTION	Making sure people have information to take action	<ul style="list-style-type: none"> Visualization Sharing with public Have and be able to share the right data Data integration Tailored communications that resonate with different audiences 	Software Requirement: ArcGIS Desktop Pro , ArcGIS Creator License (x1 comes with Desktop) Hosting: ArcGIS Online (public); Enterprise (internal) Workflow: Operations Dashboard App , StoryMaps App , Public Information Maps Configurable App Template (Web AppBuilder) ; Dashboard Best Practices
Countermeasures & Mitigation SUPPLY	Getting medicines and supplies where they are needed	<ul style="list-style-type: none"> Understand interactions, clinic placement Real-time pulse on resources: medicine, PPE, testing kits, and other supplies Ability to monitor human and material assets 	Software Requirement: ArcGIS Desktop Pro , ArcGIS Creator License (x1 comes with Desktop) Hosting: ArcGIS Online or Enterprise Workflow: Survey123 App , Ex. Special Needs Requests
Surge Management MAXIMIZATION (CAPACITY)	Expanding medical services to handle large events	<ul style="list-style-type: none"> Determining where to expand medical services (safety materials, quarantine sites, temporary medical clinics). Provide tools to partners and citizens to locate resources 	Software Requirement: ArcGIS Desktop Pro Hosting: ArcGIS Online or Enterprise Workflow: Web AppBuilder, Ex. My Hazard Information
Biosurveillance PREDICTION	Investigating and identifying health threats	<ul style="list-style-type: none"> Understand patterns in space and time Turn raw data into actionable info Have the ability to detect emerging threats Predict outbreak spread 	Software Requirement: ArcGIS Desktop Pro , ArcGIS Creator License Hosting: ArcGIS Online or Enterprise Workflow: Predictive Analysis, Ex. Vector-Borne Disease
Incident Management COORDINATION	Coordinating an effective response	<ul style="list-style-type: none"> Know where there is an incident event and its perimeters Put all data in one place 	Software Requirement: ArcGIS Desktop Pro Hosting: ArcGIS Online or Enterprise Workflow: Web AppBuilder, Situational Awareness Viewer
Community Events GATHERING CROWDS (Extra; not CDC Domain)	Planning community or special events	<ul style="list-style-type: none"> Safe management and gathering of groups Large-scale isolation prevention 	Software Requirement: ArcGIS Desktop Pro Hosting: ArcGIS Online or Enterprise Workflow: Manage Community Events

Recommendations	Examples	Next Steps
Software: Desktop, Business Analyst, Community Analyst Collaboration: Enterprise, ArcGIS Hub, ArcGIS Online Services: Training, Advantage Program	COVID-19 GIS Hub Oregon Emergency Management Oklahoma Coronavirus Disease 2019 Status Missouri COVID-19 Impact Planning Report Viewer	Contact Samantha Williams swilliams@esri.com for: <ul style="list-style-type: none"> Assess current resources & needs Review capabilities desired Receive a quote